

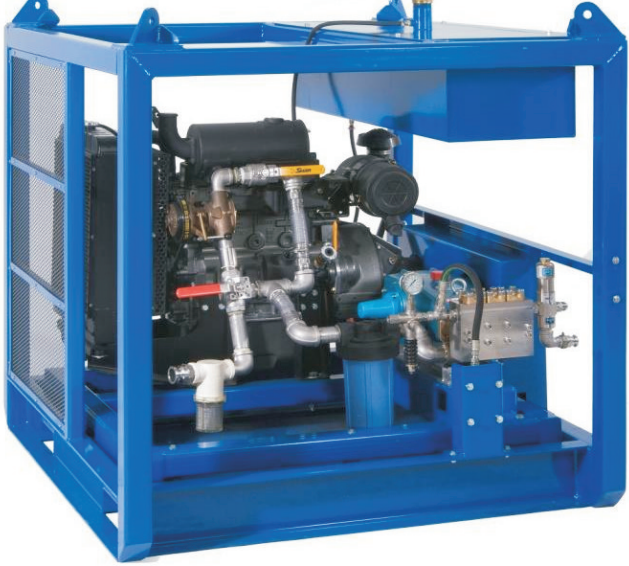


# **CAVIBLASTER™**

## Model YC-2040

Gary Herman Companies, LLC.  
4706 Curtis Lane  
New Iberia, LA 70560  
337-367-2880 [www.alpha4rentals.com](http://www.alpha4rentals.com)

### Specifications and Options



SKID	
Dimensions:	
Height	64" / 163 cm
Width	55" / 140 cm
Length	62" / 158 cm
Weight	2,400 LBS / 1,090 kg
Fuel/Oil Containment Pan	Yes
Lifting Eyes / Fork Slots	Yes

PUMP SYSTEM	
Pressure Pump	CAT 3560
Pump Material / Type	SS Positive Displacement
Flow Rate	20 GPM / 75 lpm
Nozzle Pressure	3,700 PSI / 255 Bar
Hose Diameter / Max. Length	3/4" / 600 LF - 19 mm / 180 m

FEED SYSTEM	
Feed Pump	JABSCO
Pump Material	Brass / SS Shaft
Flow Rate	26 GPM / 98 lpm
Clutch	Belt Drive / Manual Clutch

DRIVE SYSTEM	
Engine	Yanmar 4TNV98
Engine Type	4-Cylinder - 4-Cycle
Cooling System	Liquid
Combustion System	Direct Injection
Output Maximum HP/kW	68 / 51
Output Continuous HP/kW	63 / 47
Clutch	Twin Disc PTO
Starting System	Electric or Air
Emergency Shut-off	Standard

