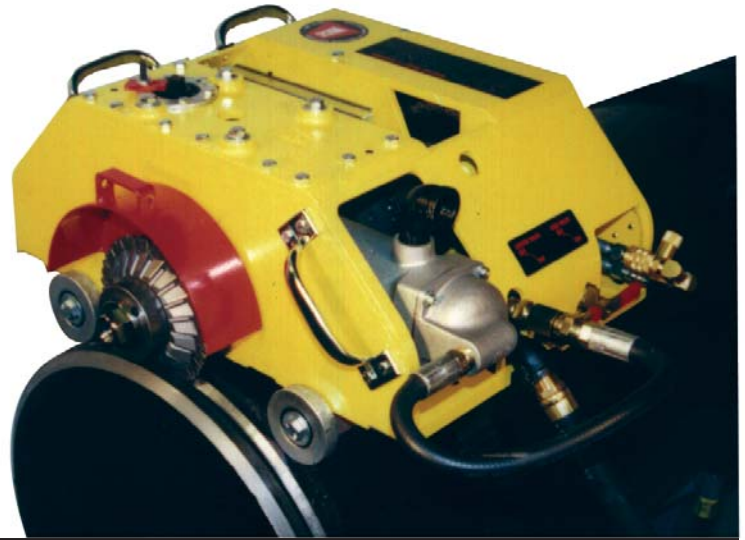




# Trav-L-Cutter

The **WACHS TRAV-L-CUTTER** is a portable milling machine capable of cold cutting and beveling simultaneously on all machineable pipe materials, pipe schedules and pipe sizes from 6" up to 72" O.D. Secured by its own tensioning chain, the TRAV-L-CUTTER propels itself around the pipe, machining as it travels.

- **Safe, Cold Cutting**
- **Compact design, Easy Set-Up**
- **Horizontal and Vertical Cutting**



## **Fast and Accurate**

Wachs high speed cutters remove 3/16" of metal while cutting, leaving the pipe end with a smooth, machined finish. Typical tolerances of up to 1/16" closure are possible.

The chain feed system maintains continuous out-of-round compensation while providing positive drive under all conditions for accurate cuts.

By using an optional guide track and special guide track wheels, accuracy of .005" can be maintained even in zero visibility situations on all pipe sizes. This cutting method facilitates section removal in the field where new sections, pre-cut by the same method, can be easily dropped into place.

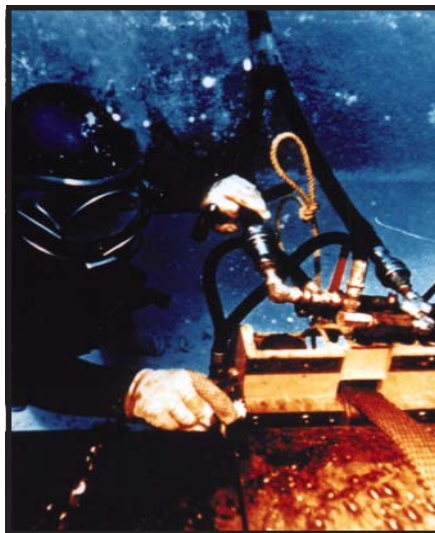
## **Operates Anywhere**

In pneumatic or hydraulic driven models, the Trav-L-Cutter will operate on horizontal or vertical pipe, in the field or the shop, in a mud filled ditch or underwater, where it has been used successfully at depths of 600 feet.

## **All Pipe Diameters Including Tanks Hydraulic Trav-L-Cutters**

Materials such as carbon steel, ductile iron, cast iron and most alloys in all pipe sizes from 6" to 72" can be cold cut and beveled simultaneously. It can tackle tanks and vessels up to 33 feet in diameter.

Hydraulic models offer the inherent advantages of a completely sealed and self-lubricating closed loop system. The Model HE is particularly suited to field machining operations under the type of hostile conditions often found on offshore drilling rigs, pipelines and on construction work in rivers and harbors. Corrosion from constant exposure to salt water can be minimized with a stainless steel accessory package including special bearings, seals and anti-corrosive metal coatings.



## **Safe and versatile**

The Trav-L-Cutter can be approved for use in explosive conditions, like natural gas, crude product and fuel lines and has even been used to cut missile fuel cells. The Trav-L-Cutter can also be adapted to simultaneously cut off and groove pipe in one cut. Cutters are available for Victaulic and other grooved coupling systems.

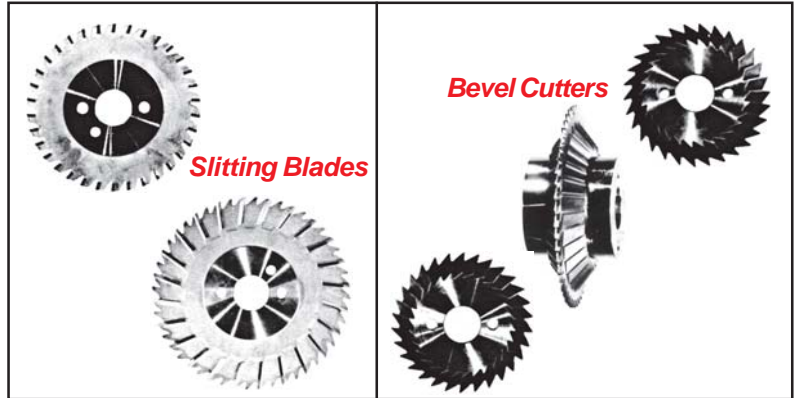
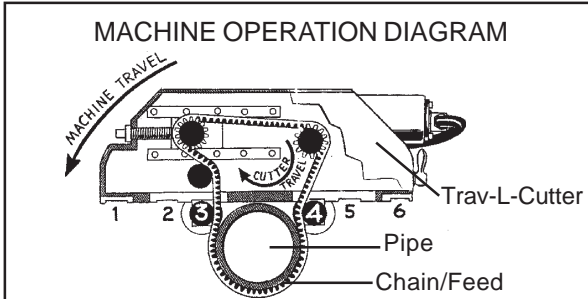
***"Due to its rugged construction it's not unusual to find Trav-L-Cutters still operating after 20 years of service."***

# Trav-L-Cutter Model E (Pneumatic), Model HE (Hydraulic)



## TRAV-L-CUTTER SLITTING BLADES AND BEVEL CUTTERS

Wachs supplies a wide variety of cutting blades to meet most applications. These include slitting blades for pipe materials and schedules, beveling cutters for 37.5° and 30°. Most are in stock and ready for overnight shipment. Please contact your local Wachs representative for availability.



### Standard Equipment:

- Operating manual and isometric parts list
- Operating tools
- Spare Chain
- Connecting Pins
- Basic mounting chain for 6" dia. pipe
- Steel Storage Case
- Reversible Feed Motor
- 6' whip hose w/oiler (air only)

### Optional Equipment:

- Additional chain for any diameter pipe
- Additional cutter blades
- Spray mist cooling system
- Halogen-free cutter coolant
- Guide Track and wheels to fit all pipe sizes up to 72" for vertical cutting
- Multiple pass cutting or high accuracy cutting
- Long cutter spindle for use w/ grooving cutters
- Corrosion resistant package

## SPECIFICATIONS

<b>Machining Capacity:</b>	6" thru 72" (153 to 1829 mm) pipe, large diameter vessels.
<b>Cutter Drive:</b>	<b>Pneumatic:</b> 4 hp governed air motor coupled with worm gearbox. <b>Hydraulic:</b> As above, with hydraulic motor.
<b>Cutter Speed:</b>	<b>Pneumatic:</b> 55 rpm adjustable from 35 to 55 rpm for use on work-hardened alloys. <b>Hydraulic:</b> Adjustable 0-60 rpm.
<b>Feed:</b>	<b>Pneumatic:</b> 3/4 hp air motor coupled through overload clutch, gearbox and chain reduction to final machine drive sprocket. <b>Hydraulic:</b> 4 hp hydraulic motor.
<b>Feed Method:</b>	Positive, nonslip chain drive.
<b>Air Requirements:</b>	100 cfm @ 90 psi.
<b>Hydraulic Requirements:</b>	15 gpm @ 1500 psi.
<b>Work Speed:</b>	3" of surface feed per minute, max. (1" dia./min.). (10" pipe = 10 min.) Over 1/2" wall as well as most alloys require reduced feed rate.
<b>Clearance:</b>	10"-12" radial, 20" axial.
<b>Controls (Model E &amp; HE):</b>	Cutter on-off, feed on-off, with interlock to prevent machine feed unless cutter is turning, adjustable feed control. (Model HE Only) Flow control valves. Separate controls provide adjustable spindle speed and cutter speed. Forward/Reverse valve governs machine travel direction.
<b>Weight:</b>	Operating : 215 lbs., Shipping : 418 lbs.
<b>Finish:</b>	Paint.
<b>Dimensions (LxWxH):</b>	24" (61 cm) x 20" (51 cm) x 10.75" (28 cm).



E.H. WACHS COMPANY 600 Knightsbridge Parkway Lincolnshire, IL 60069  
Phone: (847) 537-8800 Worldwide (800) 323-8185 in the USA Fax (847) 520-1147  
wachsco.com

